

SITUASI SEMASA
PENYAKIT BAWAAN VEKTOR DI KUALA LUMPUR DAN PUTRAJAYA
 Bagi Minggu Epid 25/2019 (16.06.2019 – 22.06.2019)

**JADUAL 1: PERBANDINGAN KUMULATIF KES DENGGI KUALA LUMPUR DAN PUTRAJAYA
 PADA MINGGU EPID 25/2019 (2018 VS. 2019)**

| Bil. | Zon | Jumlah Kes | | Perbezaan Kes | Perbezaan (%) |
|--------------------------|-----------|--------------------|--------------------|---------------|---------------|
| | | Sehingga ME25/2018 | Sehingga ME25/2019 | | |
| 1 | KL | 2465 (5) | 6070 (2) | +3605 | +146.2% |
| 2 | Putrajaya | 105 (0) | 641 (2) | +536 | +510.5% |
| Kuala Lumpur & Putrajaya | | 2570 (5) | 6711 (2) | +4141 | +161.1% |

Nota: () Bilangan Kematian

Purata Kes Mingguan : 268

**JADUAL 2: KES DENGGI DILAPORKAN MENGIKUT PEJABAT KESIHATAN
 PADA MINGGU EPID 25/2019**

| Bil. | Pejabat Kesihatan | Parlimen | Jumlah Kes | | | | Jumlah Kes Sehingga Minggu 25/2019 | Peratus (%) Kes |
|--------------------------|-------------------|---------------|--|---------|--|--------|------------------------------------|-----------------|
| | | | Minggu 24/2019 09.06.2019 hingga 15.06.2019 | | Minggu 25/2019 16.06.2019 hingga 22.06.2019 | | | |
| 1 | Cheras | Cheras | 15 | 50 | 18 | 56 | 1104 (0) | 16.5% |
| | | Bdr Tun Razak | 35 | | 38 | | | |
| 2 | Lembah Pantai | Lembah Pantai | 11 | 59 | 17 | 88 | 1650 (1) | 24.6% |
| | | Bkt Bintang | 16 | | 35 | | | |
| | | Seputeh | 32 | | 36 | | | |
| 3 | Kepong | Kepong | 37 | 163 (1) | 30 | 160 | 1599 (1) | 23.8% |
| | | Segambut | 66 (1) | | 80 | | | |
| | | Batu | 60 | | 52 | | | |
| 4 | Titiwangsa | Setiawangsa | 23 | 96 | 27 | 134 | 1717 (0) | 25.6% |
| | | Titiwangsa | 49 | | 61 | | | |
| | | Wangsa Maju | 24 | | 46 | | | |
| 5 | Putrajaya | Putrajaya | 33 | 33 | 46 (1) | 46 (1) | 641(1) | 9.6% |
| Kuala Lumpur & Putrajaya | | | 401 (1) | | 484 (1) | | 6711 (4) | |

Nota: () Bilangan Kematian

JADUAL 3: KES DENGGI DI LAPORKAN PADA MINGGU EPID 25/2019

| Bil. | Pejabat Kesihatan | Bilangan Kes dan Kematian dilaporkan | | Jumlah terkumpul kes denggi sehingga ME 25/2018 | Jumlah terkumpul kes denggi sehingga ME 25/2019 | Perbezaan peratus kenaikan/ Penurunan kes pada minggu epid 2018 dan 2019 (+/-) | Kadar insiden 2019 |
|---|-------------------------|--|--|---|---|--|--------------------|
| | | ME 24/2019 09.06.2019 Hingga 15.06.2019 | ME 25/2019 16.06.2019 Hingga 22.06.2019 | | | | |
| 1 | Cheras (398,360) | 50 | 56 | 659 (2) | 1104 (0) | 67.5% | 277 |
| 2 | Lembah Pantai (311,760) | 59 | 88 | 503 (1) | 1650 (1) | 228.0% | 529 |
| 3 | Kepong (571,560) | 163 (1) | 160 | 594 (0) | 1599 (1) | 169.2% | 280 |
| 4 | Titiwangsa (450,320) | 96 | 134 | 709 (2) | 1717 (0) | 142.2% | 381 |
| 5 | Putrajaya (85,500) | 3 | 46 (1) | 105 (0) | 641 (2) | 510.5% | 750 |
| Kuala Lumpur & Putrajaya (1,817,500) | | 401 (1) | 484 (1) | 2570 (5) | 6711 (4) | 161.1% | 369 |

Nota: Kadar Insiden (IR) bagi tahun 2018 adalah 418
: () Bilangan Kematian

JADUAL 4: BILANGAN WABAK DENGGI DI KUALA LUMPUR DAN PUTRAJAYA PADA MINGGU EPID 25/2019

| Bil. | Pejabat Kesihatan | Bilangan Wabak Mengikut ME 25/2019 | | Kumulatif Wabak Sehingga ME 25/2019 | | Jumlah Wabak Sehingga Minggu 25/2019 |
|---------------|-------------------|------------------------------------|--------------------------|-------------------------------------|--------------------------|--------------------------------------|
| | | Wabak Terkawal | Wabak Tidak Terkawal () | Wabak Terkawal | Wabak Tidak Terkawal () | |
| 1 | CHERAS | 16 | 3 (2) | 150 | 25 (15) | 175 (15) |
| 2 | LEMBAH PANTAI | 32 | 3 (1) | 228 | 31 (17) | 259 (17) |
| 3 | KEPONG | 46 | 13 (4) | 193 | 30 (15) | 223 (15) |
| 4 | TITIWANGSA | 34 | 2 (2) | 277 | 9 (9) | 286 (9) |
| 5 | PUTRAJAYA | 8 | 6 (5) | 65 | 18 (13) | 83 (13) |
| JUMLAH | | 136 | 27 (14) | 913 | 113 (69) | 1026 (69) |

Nota : 703 (42) : Kumulatif bilangan lokaliti wabak
: () Bilangan lokaliti hotspot

JADUAL 5: KES DAN KEMATIAN DENGGI MALAYSIA SERTA KUALA LUMPUR & PUTRAJAYA PADA MINGGU EPID 25/2019

| Bil. | Negara/ Negeri | Jum. Kes | | Perbezaan Kes | Perbezaan (%) |
|------|--------------------------|--------------------|--------------------|---------------|---------------|
| | | Sehingga ME24/2018 | Sehingga ME24/2019 | | |
| 1 | Malaysia | 27,103 (46) | 52,941 (81) | +25,838 | +195.3% |
| 2 | Kuala Lumpur & Putrajaya | 2,570 (5) | 6,711 (4) | +4,141 | +161.1% |

**JADUAL 6 : SENARAI LOKALITI WABAK DENGGI
DI KUALA LUMPUR DAN PUTRAJAYA PADA MINGGU EPID 25/2019**

| Bil | Pejabat Kesihatan | Parlimen | Lokaliti | Jum. Kes | Tempoh Wabak Berlaku (Hari) | Status | |
|-----|-------------------|------------------|--|--|-----------------------------|--------|-----|
| 1. | CHERAS | CHERAS | D'ALAMANDA PUDU IMPIAN | 3 | 3 | WT | |
| 2. | | | TAMAN MIDAH (PRIMA MIDAH HEIGHT) | 3 | 5 | WT | |
| 3. | | | TAMAN TAYTON VIEW B | 2 | 6 | WT | |
| 4. | | | TAMAN MIDAH SELATAN(TOWN HOUSE) | 3 | 14 | WT | |
| 5. | | | IXORA APARTMENT(JALAN TUN RAZAK) | 2 | 12 | WT | |
| 6. | | | WARISAN CITYVIEW FASA 1 (BLOK A, B, C, & CHJ) | 2 | 12 | WT | |
| 7. | | BANDAR TUN RAZAK | APPT CENDANA | 10 | 40 | H | |
| 8. | | | PANGSAPURI SRI PENARA FASA 1 (BLOK A-B) | 36 | 43 | H | |
| 9. | | | PPR DESA TUN RAZAK | 5 | 22 | WTK | |
| 10. | | | ALAM DAMAI(JALAN DAMAI BUDI) | 2 | 7 | WT | |
| 11. | | | PANGSAPURI KASTURI | 2 | 2 | WT | |
| 12. | | | TASIK HEIGHT APPT BLOK D, E, F, G & H | 3 | 2 | WT | |
| 13. | | | BAYU TASIK CONDO 2 | 4 | 4 | WT | |
| 14. | | | REED LAKEFIELD | 3 | 8 | WT | |
| 15. | | | KEM SG.BESI (JALAN LABUAN) BLOK E1, E2, F1, F2 | 2 | 9 | WT | |
| 16. | | | ASRAMA SMAIWP | 2 | 10 | WT | |
| 17. | | | KEM SG.BESI (JALAN LABUAN) BLOK G1,G2,G3 | 2 | 12 | WT | |
| 18. | | | PPR TAMAN MULIA | 4 | 13 | WT | |
| 19. | | | PANGSAPURI 4E | 2 | 13 | WT | |
| 20. | | LEMBAH PANTAI | LEMBAH PANTAI | PPR KG LIMAU | 2 | 5 | WT |
| 21. | | | | KG PANTAI DALAM | 3 | 5 | WT |
| 22. | | | | PPR PANTAI RIA | 2 | 6 | WT |
| 23. | | | | TAMAN SERI SENTOSA (FLAT AC4) | 4 | 13 | WT |
| 24. | | | BUKIT BINTANG | ROBSON CONDO | 5 | 7 | WT |
| 25. | | | | CENTRAL RESIDENCE | 7 | 19 | WT |
| 26. | | | | TAMAN SEPUTEH 1-5 | 2 | 3 | WT |
| 27. | | | | VANTAGE POINT CONDOMINIUM | 2 | 6 | WT |
| 28. | | | | CITY GARDEN CONDO | 4 | 19 | WT |
| 29. | | | | LAMAN CEYLON CONDO | 2 | 7 | WT |
| 30. | | | | LE CHATEAU APARTMENT | 2 | 5 | WT |
| 31. | | | | WIDURI IMPIAN CONDOMINIUM | 2 | 5 | WT |
| 32. | | | JALAN KHOO TEIK EE | 4 | 15 | WT | |
| 33. | | | SEPUTEH | Z RESIDENCE KONDO FASA 2 (C&D) | 6 | 40 | H |
| 34. | | | | PPR KG MUHIBBAH FASA 2B (BLOK G,H,I & J) | 5 | 24 | WTK |





| Bil | Pejabat Kesihatan | Parlimen | Lokality | Jum. Kes | Tempoh Wabak Berlaku (Hari) | Status |
|-----|-------------------|----------|--|----------|-----------------------------|--------|
| 35. | | | TAMAN OUG C (JLN HUJAN EMAS 4-6,SBHG JLN HUJAN EMAS) | 5 | 25 | WTK |
| 36. | | | TAMAN SRI PETALING C1-JLN 1/149D,JLN 1/149J | 5 | 17 | WT |
| 37. | | | CASA GREEN BUKIT JALIL | 2 | 3 | WT |
| 38. | | | PPR KG MUHIBBAH FASA 1(BLOK A,B,C & D) | 4 | 7 | WT |
| 39. | | | TAMAN SRI PETALING D1-JLN 1/149,SBHG 2/149D,11/149D,3-5/149D | 2 | 4 | WT |
| 40. | | | PPR PINGGIRAN 1 (BLOK A,B,C,D,E,F) | 4 | 4 | WT |
| 41. | | | TAMAN SRI PETALING C2-JLN 7/149J-11/149J,SBHG JLN 2-3/149J | 2 | 5 | WT |
| 42. | | | PARKLANE OUG CONDO (BLOK A,B,C) | 2 | 4 | WT |
| 43. | | | JALAN TIARA B - JALAN TIARA 6-10 | 2 | 5 | WT |
| 44. | | | TAMAN BUKIT INDAH 3 (JALAN LAZAT, JLN LAZAT 1-7) | 2 | 7 | WT |
| 45. | | | KUARTERS INSTITUSI PENDIDIKAN SRI SEPUTEH | 2 | 5 | WT |
| 46. | | | TAMAN OUG B (LORONG HUJAN EMAS,JLN HUJAN EMAS 1-3,SBHG JLN HUJAN,JLN 1/135) | 2 | 5 | WT |
| 47. | | | ENDAH VILLA CONDO FASA 1(BLOK 2&2A) | 3 | 19 | WT |
| 48. | | | PPR PINGGIRAN (BLOK G,H,J,K,L,M) | 2 | 10 | WT |
| 49. | | | KM1 WEST BUKIT JALIL | 3 | 8 | WT |
| 50. | | | TAMAN SRI PETALING H1-JLN WAN EMPUK,WAN EMPUK 1-2,SBHG JLN WAN SENDARI) | 3 | 8 | WT |
| 51. | | | TAMAN SRI PETALING H4-SBHG JLN PIKRAMA,LRG PIKRAMA 1-5 | 2 | 13 | WT |
| 52. | | | JALIL DAMAI APARTMENT | 3 | 12 | WT |
| 53. | | | SRI JATI 2 | 3 | 14 | WT |
| 54. | | | TAMAN SRI PETALING K1 (JALAN PASAI 1-5, SBHG JLN PERLAK DAN SBHG JLN PASAI) | 3 | 15 | WT |
| 55. | | | TAMAN PUSAT KEPONG (GREEN VIEW APARTMENT BLOK 1,2,3) | 2 | 1 | WT |
| 56. | | | LAMAN RIMBUNAN KEPONG (JALAN RIMBUNAN MATAHARI 1-3) | 2 | 2 | WT |
| 57. | | | PELANGI MAGNA (BLOK A DAN B) | 12 | 29 | WTK |
| 58. | | | KUARTERS BALAI BOMBA DAN PENYELAMAT | 8 | 18 | WT |
| 59. | | | KEPONG BARU (JALAN API-API 1-3) | 2 | 3 | WT |
| 60. | | | MUTIARA MAGNA (BLOK B,C,D) | 3 | 4 | WT |
| 61. | KEPONG | KEPONG | LAMAN RIMBUNAN KEPONG (JALAN RIMBUNAN MAWAR, 1-8) | 3 | 5 | WT |
| 62. | | | KEPONG BARU (JALAN HELANG,HELANG LAUT,HELANG JAMBUL, HELANG SEWA) | 3 | 7 | WT |
| 63. | | | FLAT MUTIARA FADASON (BLOK A,B,C) | 2 | 9 | WT |
| 64. | | | LAMAN RIMBUNAN KEPONG (JALAN RIMBUNAN MELATI 1-4) | 3 | 10 | WT |
| 65. | | | RESIDENSI PERDANA JALAN METRO PERDANA BARAT | 2 | 10 | WT |
| 66. | | | JINJANG UTARA (JALAN JINJANG AMAN 1-5) | 2 | 12 | WT |

| Bil | Pejabat Kesihatan | Parlimen | Lokality | Jum. Kes | Tempoh Wabak Berlaku (Hari) | Status | |
|-----|-------------------|----------|---|---|-----------------------------|--------|-----|
| 67. | | | JINJANG UTARA (JALAN TEBING TIMUR) | 3 | 12 | WT | |
| 68. | | | FORTUNE AVENUE CONDO (BLOK A & B) | 3 | 13 | WT | |
| 69. | | | KEPONG BARU (JLN ANTOI(26-86), JLN ANTOI KIRI(50-102), JLN ANTOI KANAN 1&2) | 3 | 16 | WT | |
| 70. | | SEGAMBUT | MONT KIARA (CASA KIARA 1 CONDOMINIUM) | 2 | 1 | WT | |
| 71. | | | TTDI (JALAN DATUK SULAIMAN 4 (2-98) | 13 | 36 | H | |
| 72. | | | RUMAH KONGSI (TAPAK BINA UNITED POINT) | 22 | 45 | H | |
| 73. | | | PELANGI INDAH CONDOMINIUM | 10 | 37 | H | |
| 74. | | | TAMAN SEGAMBUT DAMAI (JALAN 3/60B, 4/60B, 2/60B, 6/60B, 7/60B) | 8 | 14 | WTK | |
| 75. | | | TAMAN MEGAH (LORONG UDANG PASIR 1,2, JALAN UDANG GANTUNG) | 11 | 17 | WTK | |
| 76. | | | CASA KIARA 2 (2 BLOK) | 5 | 22 | WTK | |
| 77. | | | TAMAN SRI SINAR (PLAZA SINAR) | 12 | 27 | WTK | |
| 78. | | | TAMAN SEGAMBUT AMAN | 22 | 30 | WTK | |
| 79. | | | TAMAN SRI SINAR (JALAN 3/38D (1-83), 2, 4, 5/38D) | 5 | 6 | WT | |
| 80. | | | ASRAMA TAN CHONG MOTOR | 8 | 12 | WT | |
| 81. | | | TAMAN SRI SINAR (JALAN 10,12,13,14 / 38D) | 3 | 2 | WT | |
| 82. | | | PUTRA MAJESTIK KONDO (BLOK A,B,C) | 2 | 3 | WT | |
| 83. | | | TAMAN CUEPACS (JLN UDANG GANTUNG,1,2,3)(JLN&LRG UDANG PASIR 1,2,) | 3 | 3 | WT | |
| 84. | | | DESA KIARA CONDOMINIUM | 2 | 3 | WT | |
| 85. | | | TTDI (KIARA VIEW KONDO) | 4 | 5 | WT | |
| 86. | | | MONT KIARA (KIARA DESIGNER SUITES) | 2 | 8 | WT | |
| 87. | | | TAMAN KOK LIAN (JLN SELINGSING 1-49), JLN MANJOI 3,4,5,6(2-66) | 2 | 6 | WT | |
| 88. | | | MONT KIARA (KIARAVILLE) | 2 | 8 | WT | |
| 89. | | | SRI INTAN CONDOMINIUM 1 | 3 | 12 | WT | |
| 90. | | | SRI PUTRAMAS 1 (BLOK A,B,C,D,E) | 2 | 12 | WT | |
| 91. | | | BATU | KAMPUNG BATU DELIMA | 2 | 0 | WT |
| 92. | | | | PPAM METROPOLITAN | 2 | 1 | WT |
| 93. | | | | FLAT SRI PERAK (BLOK 35,37,39,41) | 11 | 42 | H |
| 94. | | | | FLAT BATU PERMAI | 8 | 22 | WTK |
| 95. | | | | PPR BATU MUDA (BLOK A, B, C DAN D) | 9 | 17 | WTK |
| 96. | | | | PANORAMA RESIDENCE CONDOMINIUM | 8 | 18 | WTK |
| 97. | | | | BANDAR BARU SENTUL FASA 3 (BLOK 21, 23, 25, 27, DAN 29) | 6 | 23 | WT |
| 98. | | | | PERMAI RIA CONDOMINIUM | 14 | 16 | WT |
| 99. | | | | FLAT DBKL BANDAR BARU SENTUL (BLOK 73, 75, 77, 79) | 2 | 2 | WT |

| Bil | Pejabat Kesihatan | Parlimen | Lokality | Jum. Kes | Tempoh Wabak Berlaku (Hari) | Status | | |
|------|---|-------------|---|------------|-----------------------------|--------|----|----|
| 100. | | | TAMAN BERINGIN (JALAN MIRI 1-3, NIAH 1-6) | 2 | 3 | WT | | |
| 101. | | | RESIDENSI SENTULMAS | 2 | 4 | WT | | |
| 102. | | | TAMAN KOPERASI POLIS FASA 2 (JALAN 54,55,61,62/10) | 2 | 4 | WT | | |
| 103. | | | TAMAN KOK LIAN(JALAN RUNGKUP) | 2 | 5 | WT | | |
| 104. | | | PPR BATU MUDA (BLOK E, F DAN G) | 2 | 6 | WT | | |
| 105. | | | PPR BERINGIN (D,E,F) | 4 | 7 | WT | | |
| 106. | | | FLAT SENTUL UTAMA | 2 | 7 | WT | | |
| 107. | | | VILLA ANGSANA CONDOMINIUM | 3 | 5 | WT | | |
| 108. | | | MELUR APARTMENT | 3 | 8 | WT | | |
| 109. | | | TAMAN KOPERASI POLIS FASA 2 (JALAN 36/10 - 45/10) | 2 | 9 | WT | | |
| 110. | | | TAMAN BATU PERMAI (JALAN /18B) | 3 | 12 | WT | | |
| 111. | | | FLAT UNION | 2 | 13 | WT | | |
| 112. | | | TAMAN KOK LIAN (JALAN BATU KAPUR, JALAN BATU KAPUR 1-2 DAN JALAN BATU BERANI) | 2 | 13 | WT | | |
| 113. | TAMAN DATO SENU (JALAN DATO SENU 10-15) | 4 | 25 | WT | | | | |
| 114. | | SETIAWANGSA | PPR AIR PANAS (BLOK G,H) | 2 | 1 | WT | | |
| 115. | | | DESA SETIAWIRA (BLOK A - BLOK F) | 7 | 11 | WT | | |
| 116. | | | VILLA WANGSA MAS | 8 | 13 | WT | | |
| 117. | | | PA DESA REJANG (BLOK G,H,J,K) | 2 | 1 | WT | | |
| 118. | | | SEK 5 WANGSA MAJU (JLN10/27A) | 3 | 3 | WT | | |
| 119. | | | KEDIAMAN SISWA JAYA UTM(JLN REJANG 4) | 4 | 21 | WT | | |
| 120. | | | APPT DAHLIA (TMN SETAPAK JAYA) | 3 | 8 | WT | | |
| 121. | | | TAMAN SETAPAK JAYA F (JALAN REJANG 7, 8, 9, 10) | 2 | 11 | WT | | |
| 122. | | | TITIWANGSA | TITIWANGSA | DESA PANDAN (BLOK F) | 2 | 1 | WT |
| 123. | | | | | QRTS KERAJAAN JLN U-THANT | 40 | 36 | H |
| 124. | DESA PASIFIK AMPANG (BLOK A,B,D,E,H) | 31 | | | 39 | H | | |
| 125. | DESA PASIFIK AMPANG (BLOK C,F,G) | 6 | | | 6 | WT | | |
| 126. | QRTS KAKITANGAN ATM (JLN U-THANT) | 16 | | | 11 | WT | | |
| 127. | KG BARU (FLAT PKNS) | 4 | | | 2 | WT | | |
| 128. | JLN LANGGAK GOLF (SERISKA CONDOMINIUM) | 2 | | | 2 | WT | | |
| 129. | JALAN CHEMOR (TITIWANGSA CNTRL CONDO) | 2 | | | 5 | WT | | |
| 130. | GCB COURT CONDO | 3 | | | 7 | WT | | |
| 131. | VISTANA RESIDENCE | 2 | | | 5 | WT | | |
| 132. | JALAN PAHANG (RUMAH KEDAI) | 2 | | | 7 | WT | | |
| 133. | PPR COCHRANE PERKASA | 4 | | | 6 | WT | | |
| 134. | PPR LAKSAMANA (A/B/C) | 3 | 14 | WT | | | | |

| Bil | Pejabat Kesihatan | Parlimen | Lokality | Jum. Kes | Tempoh Wabak Berlaku (Hari) | Status |
|------|----------------------------|-------------|--|----------|-----------------------------|--------|
| 135. | | WANGSA MAJU | DESA VIEW TOWER | 5 | 5 | WT |
| 136. | | | FLAT DANAU KOTA (BLOK D & E) | 7 | 10 | WT |
| 137. | | | PULAPOT JALAN GENTING KLANG | 10 | 9 | WT |
| 138. | | | TAMAN DANAU KOTA(JLN 1/23B-8/23B) | 2 | 2 | WT |
| 139. | | | TAMAN WANGSA MELAWATI(LORONG WANGSA CERIA) | 2 | 3 | WT |
| 140. | | | SEK 2 WANGSA MAJU (MENARA ALPHA KONDO) | 2 | 4 | WT |
| 141. | | | OFF JLN GOMBAK (DIAMOND RESIDENCES) | 2 | 4 | WT |
| 142. | | | SEK 1 W/MAJU BLOK D | 2 | 5 | WT |
| 143. | | | DESA PUTRA CONDOMINIUM | 2 | 4 | WT |
| 144. | | | SEK 2 W/MAJU BLOK B | 2 | 7 | WT |
| 145. | | | MEDAN IDAMAN(IDAMAN SUTERA KONDO) | 4 | 8 | WT |
| 146. | | | SEK 2 WANGSA MAJU (BLOK G) | 2 | 9 | WT |
| 147. | | | FLAT SRI TIOMAN 2 | 3 | 16 | WT |
| 148. | | | TAMAN DESA SETAPAK (JLN 35/27B-41/27B) | 3 | 14 | WT |
| 149. | TAMAN PELANGI(JALAN 16/28) | 4 | 24 | WT | | |
| 150. | PUTRAJAYA | PUTRAJAYA | PRESINT 18 - PARCEL 18R12 - BLOK EFGH | 20 | 60 | H |
| 151. | | | PRESINT 14 - PARCEL SUB-12 | 9 | 43 | H |
| 152. | | | PRESINT 14 - PARCEL SUB-7 | 55 | 61 | H |
| 153. | | | PRESINT 18 - PARCEL 18R12 -BLOK ABCD | 26 | 47 | H |
| 154. | | | PRESINT 17 - PPA1M PUDINA | 45 | 45 | H |
| 155. | | | PRESINT 18- JALAN P18K | 9 | 22 | WTK |
| 156. | | | PRESINT 8 PARCEL 4B | 3 | 3 | WT |
| 157. | | | PRESINT 8 PARCEL 4C | 2 | 4 | WT |
| 158. | | | PRESINT 15 - PARCEL 15-12A | 3 | 5 | WT |
| 159. | | | PRESINT 18 - JALAN P18H | 3 | 5 | WT |
| 160. | | | PRESINT 9 - FASA 7 | 2 | 10 | WT |
| 161. | | | PRESINT 11 - JALAN P11A2 | 3 | 23 | WT |
| 162. | | | PRESINT 11 - JALAN P11B1 | 2 | 12 | WT |
| 163. | | | PRESINT 18 - PARCEL R8 | 2 | 12 | WT |

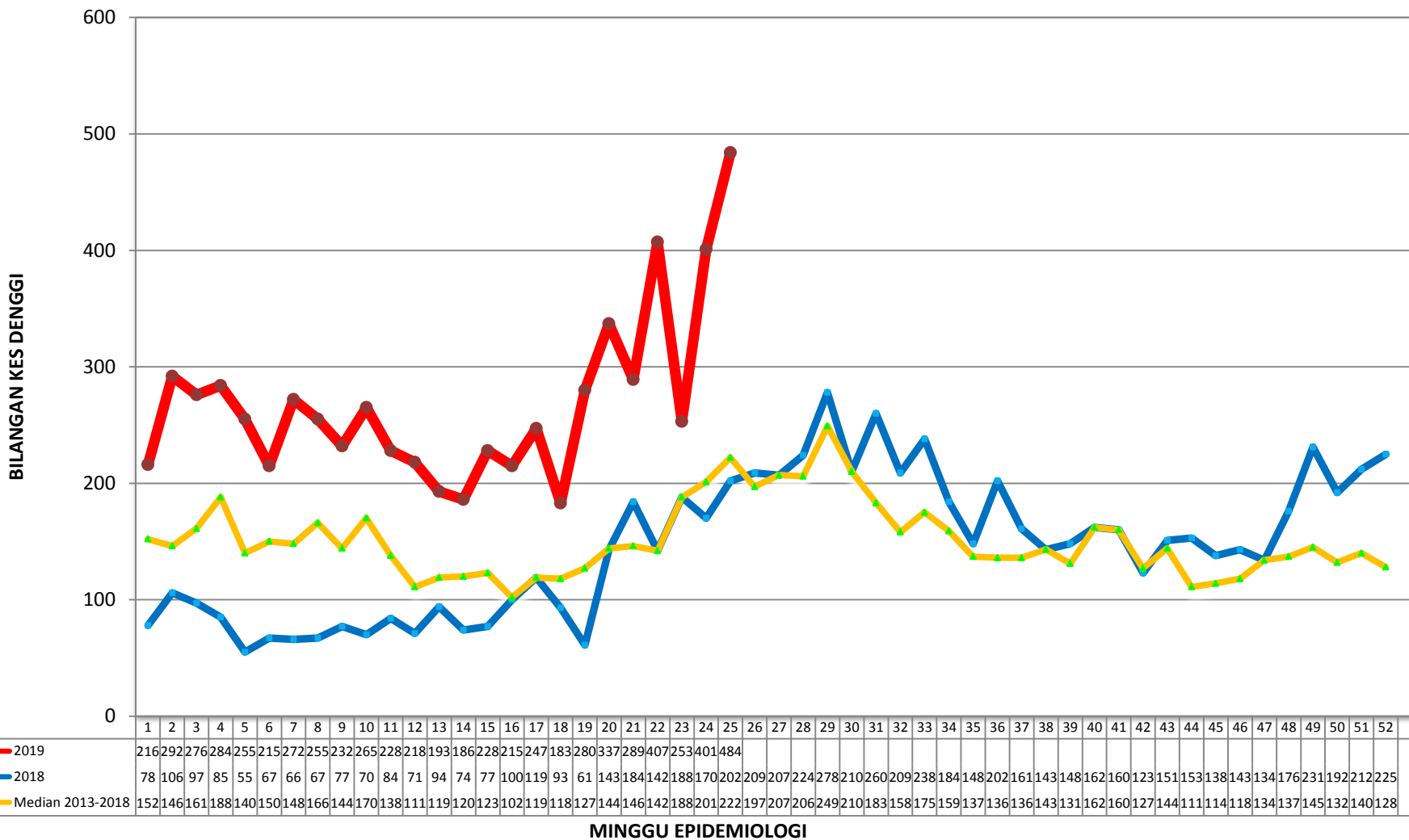
Nota :

-  : Lokality hotspot
-  : Wabak baru pada minggu epid semasa
-  : Wabak Tidak Terkawal
-  : Wabak Tamat

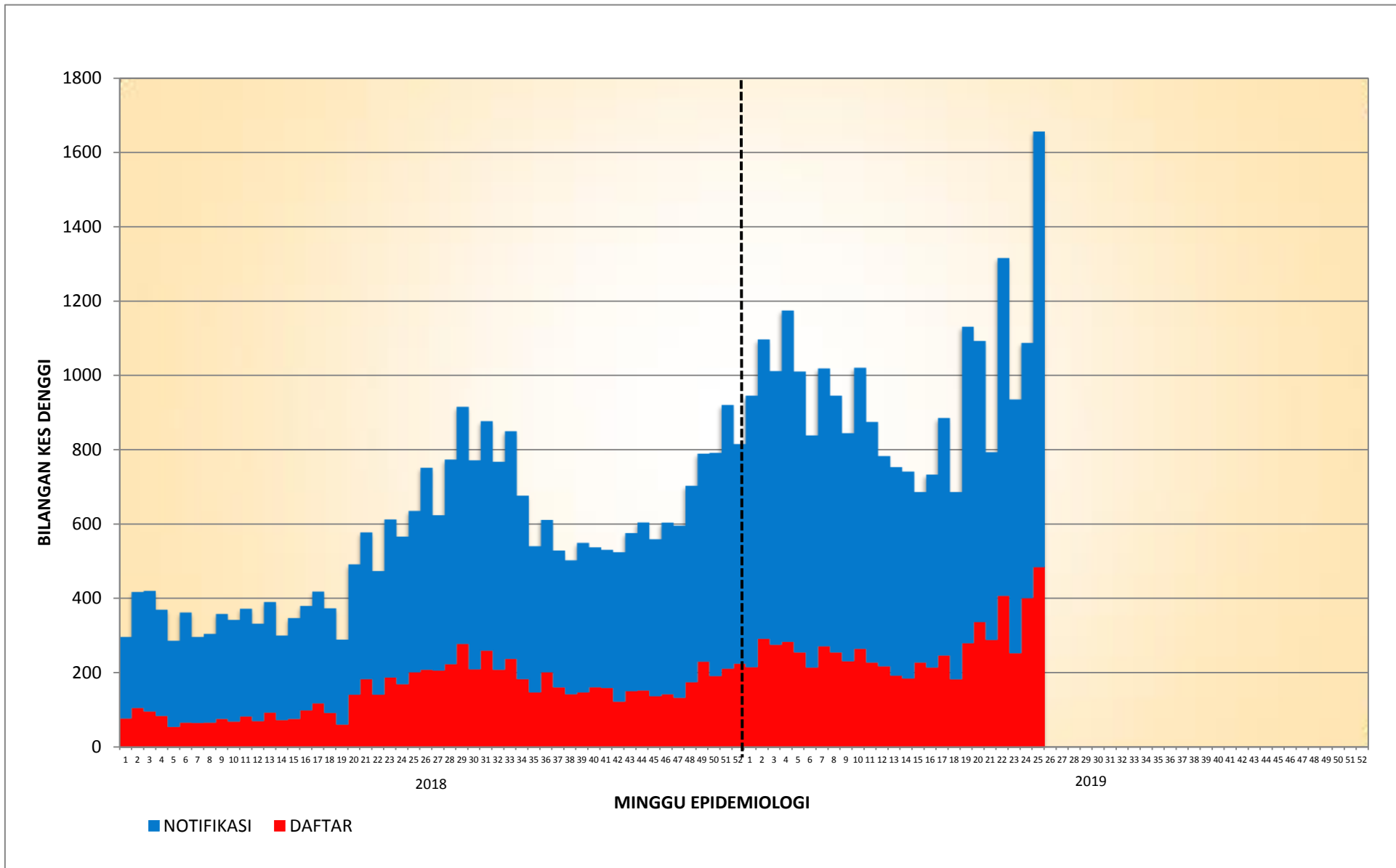
Disediakan oleh : Cawangan Penyakit Bawaan Vektor Jabatan Kesihatan WP Kuala Lumpur dan Putrajaya
Disemak dan : Ketua Penolong Pengarah Kanan (Vektor)

Disahkan oleh Jabatan Kesihatan WP Kuala Lumpur dan Putrajaya
Tarikh : 23 Jun 2019

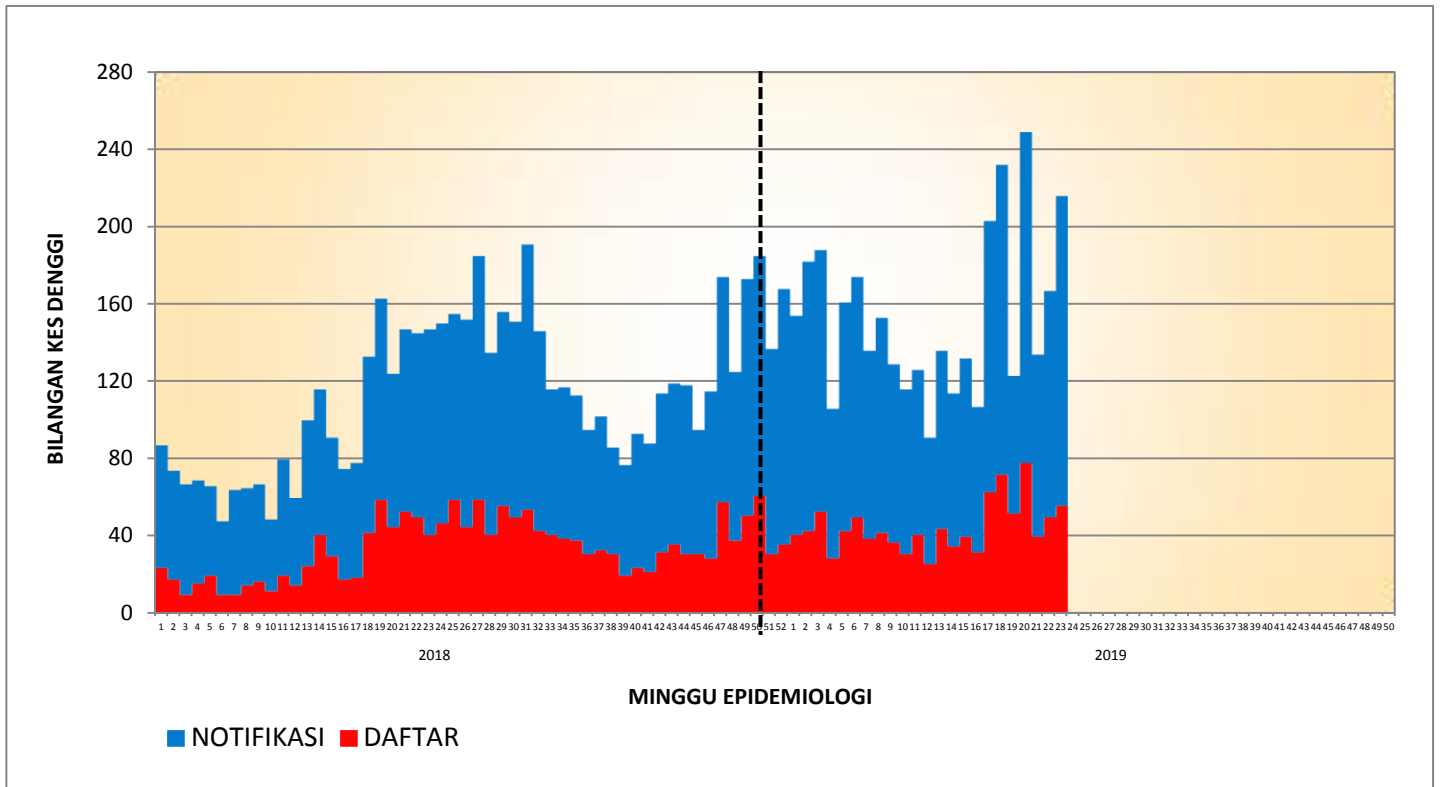
**TREND KES DENGGI MENGIKUT MINGGU EPID BAGI WILAYAH PERSEKUTUAN & PUTRAJAYA
BAGI TAHUN 2018 DAN 2019 BAGI ME25/2019**



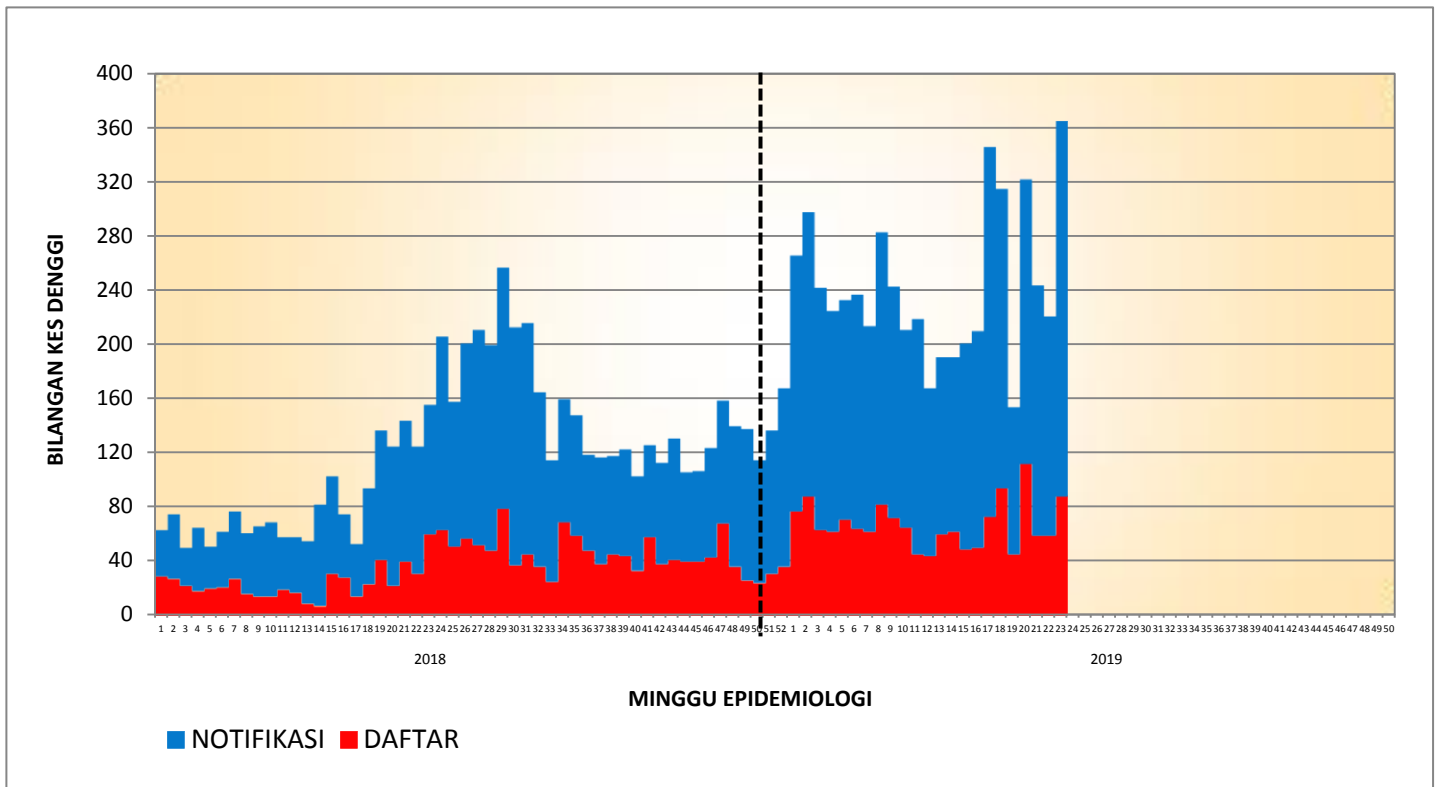
**KES DAFTAR DENGGI BAGI WILAYAH PERSEKUTUAN KUALA LUMPUR & PUTRAJAYA
(SEHINGGA 22 JUN 2019)**



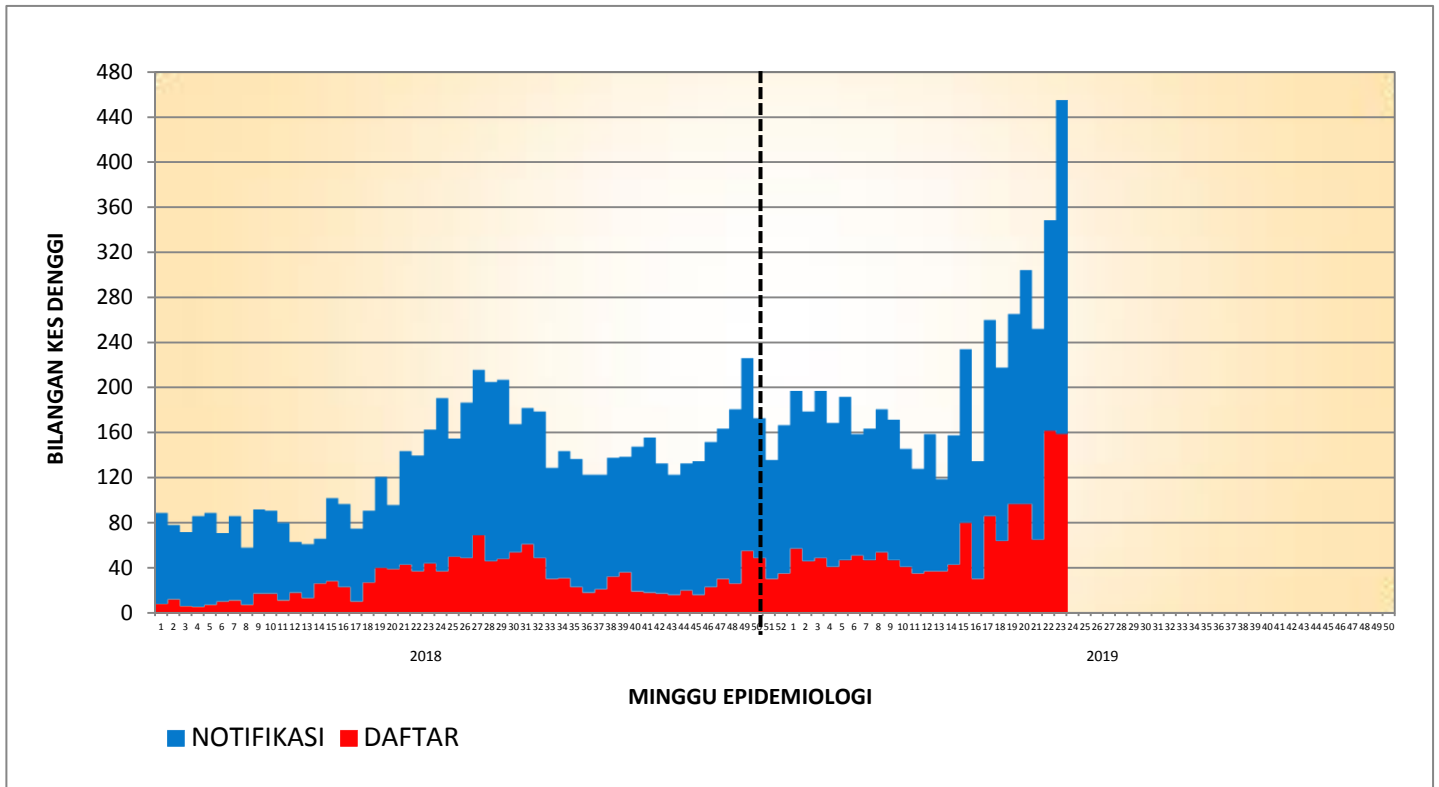
**KES DAFTAR DENGGI BAGI PK CHERAS
(SEHINGGA 22 JUN 2019)**



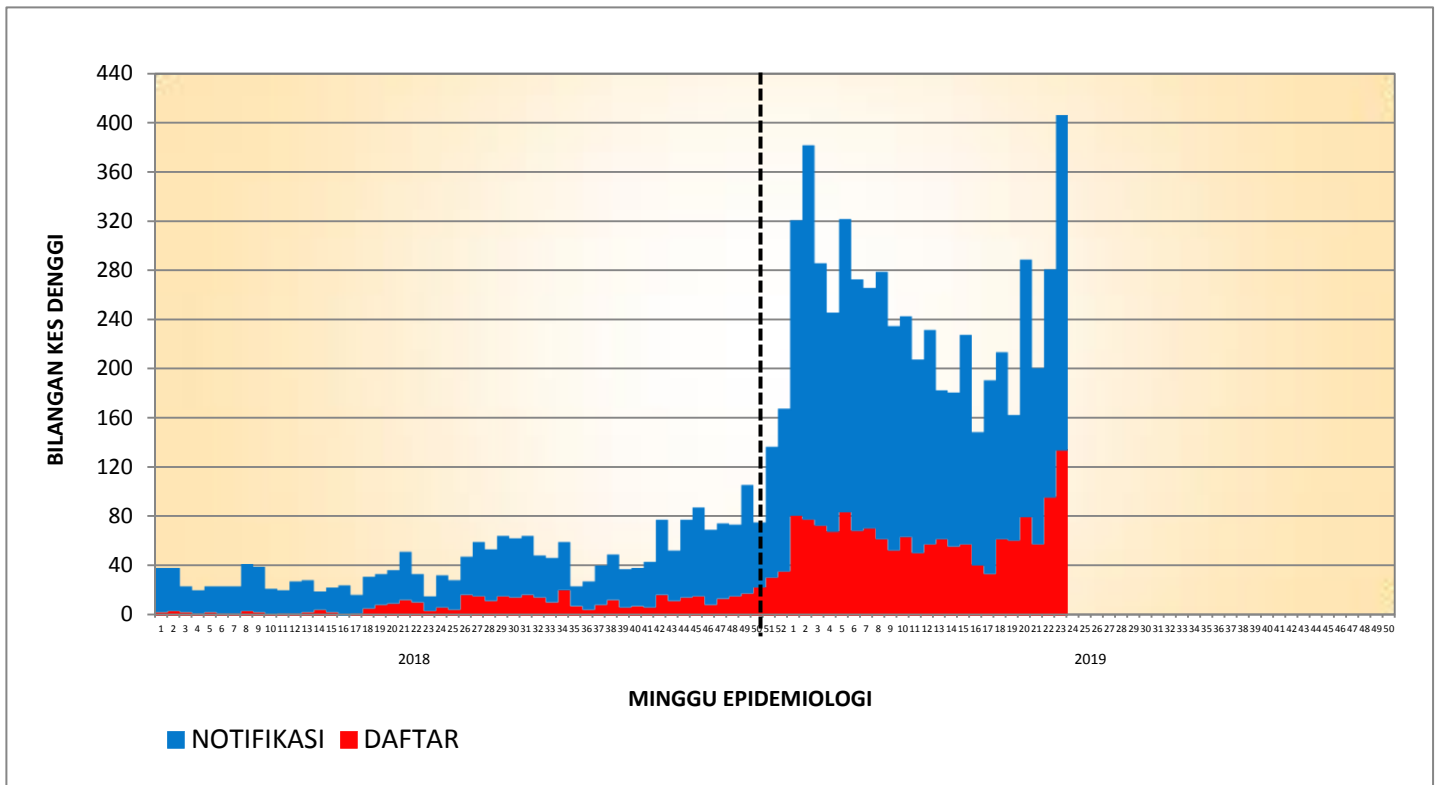
**KES DAFTAR DENGGI BAGI PK LEMBAH PANTAI
(SEHINGGA 22 JUN 2019)**



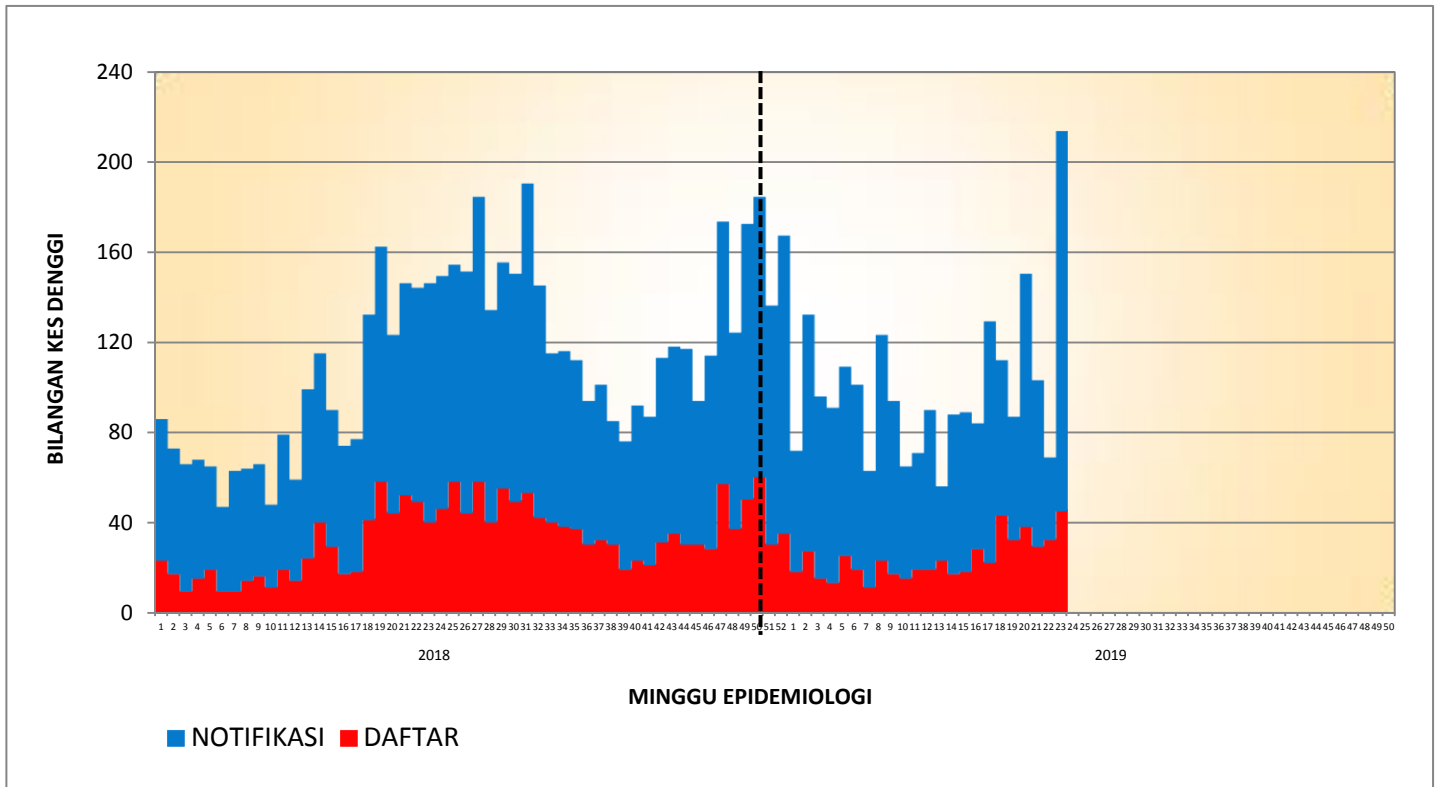
**DAFTAR DENGGI BAGI PK KEPONG
(SEHINGGA 22 JUN 2019)**



**KES DAFTAR DENGGI BAGI PK TITIWANGSA
(SEHINGGA 22 JUN 2019)**



**DAFTAR DENGGI BAGI PK PUTRAJAYA
(SEHINGGA 22 JUN 2019)**



**TREN KUMULATIF WABAK, WTK/HOTSPOT DENGGI MENGIKUT MINGGU EPID
BAGI WILAYAH PERSEKUTUAN & PUTRAJAYA
BAGI TAHUN 2016, 2017, 2018 DAN 2019 BAGI ME25/2019**

